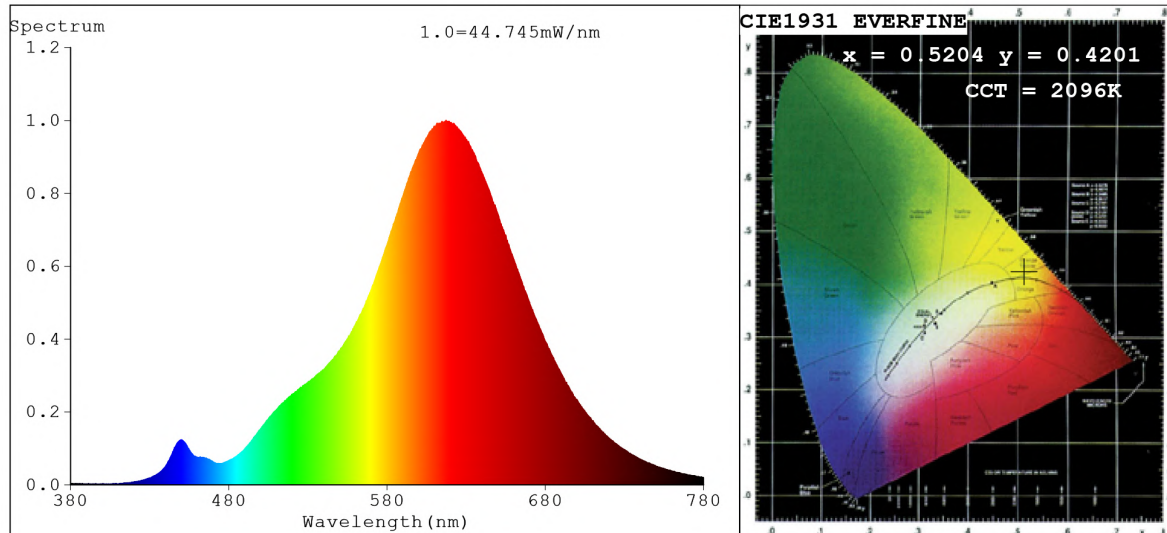


Spectrum Test Report



Color Parameters:

Chromaticity Coordinate: $x=0.5204$ $y=0.4201$ $u'=0.2974$ $v'=0.5401$
 CCT=2096K (Duv=0.0018) Dominant WL:Ld =587.6nm Purity=82.3%
 Ratio:R=32.0% G=66.8% B=1.2%;;Peak WL:Lp=617.3nm FWHM=103.7nm
 Render Index:Ra=82.7 CRI=79.0 TM30:Rf=84 Rg=92
 R1 =81 R2 =92 R3 =95 R4 =81 R5 =81 R6 =94 R7 =81
 R8 =57 R9 =13 R10=84 R11=82 R12=84 R13=84 R14=98 R15=72

Photo Parameters:

Flux = 1650 lm Eff. : 114.53 lm/W Fe = 5.634 W Scotopic:1481.8 S/P:0.89798

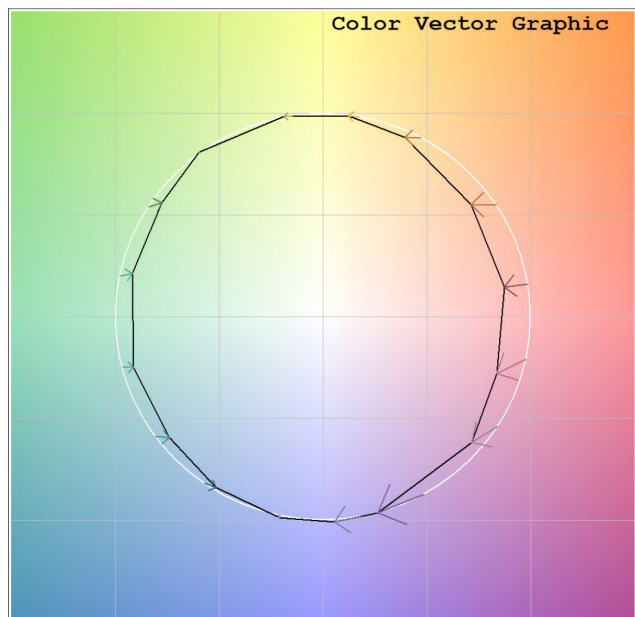
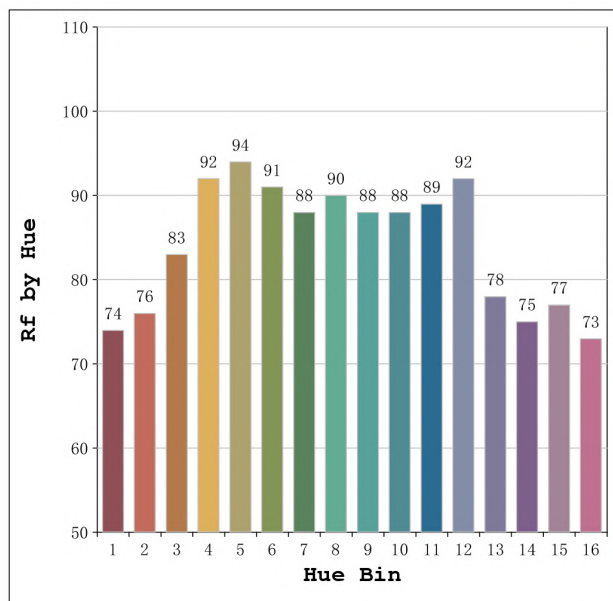
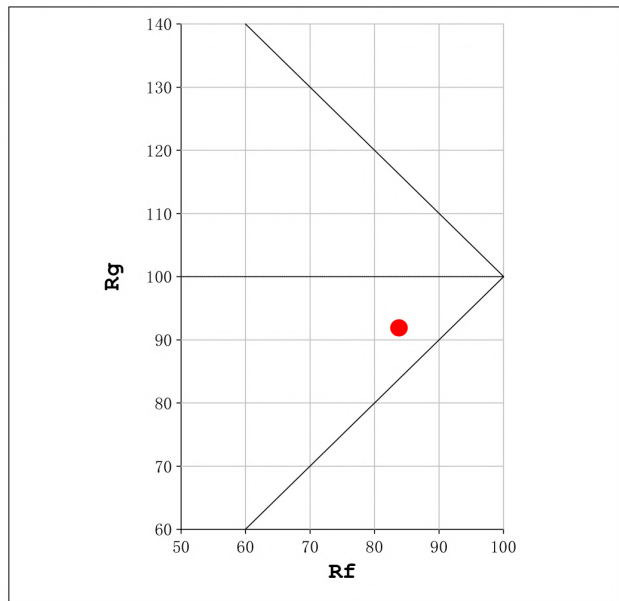
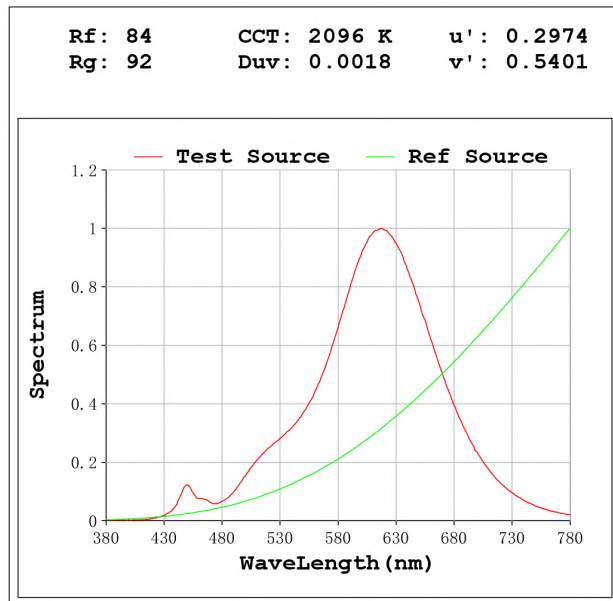
Electrical parameters:

V = 23.998 V I = 0.6004 A P = 14.41 W PF = 1.000

Status: Integral T = 500 ms Ip = 43046 (66%)

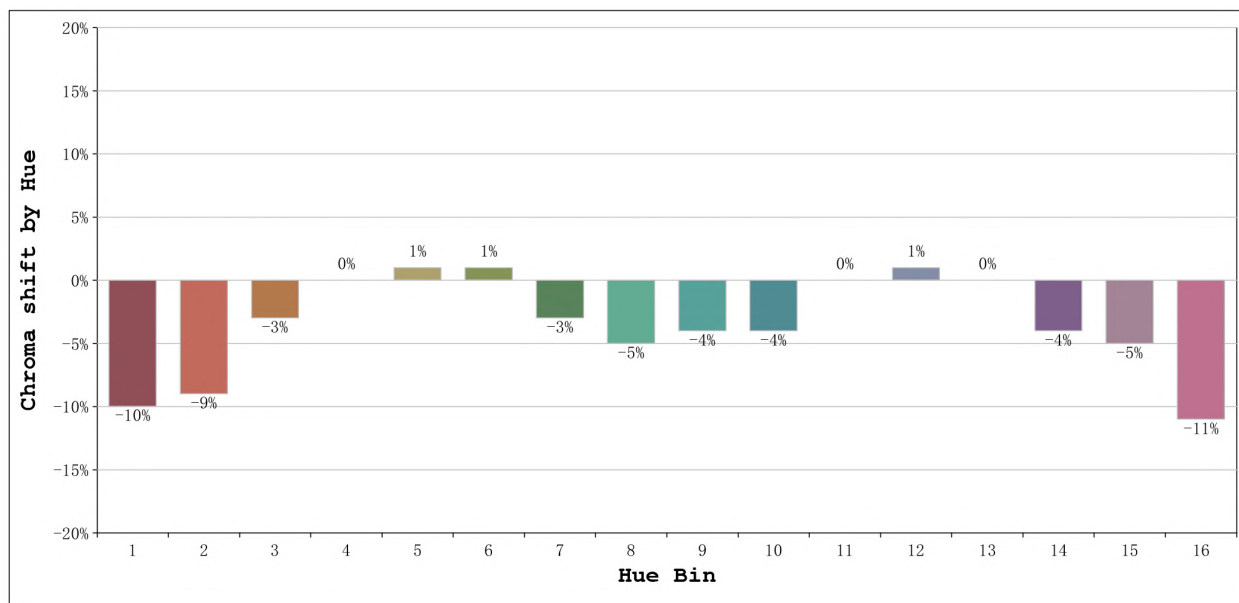
Model:Ecoled Élite 15 2100K
 Tester:Sergio Carneros
 Temperature:20Deg
 Manufacturer:Luz Negra

Number: 31.016
 Date:2023-12-13 11:36:42
 Humidity:50%
 Remarks:100cm de tira flexible



Model:Ecoled Élite 15 2100K
 Tester:Sergio Carneros
 Temperature:20Deg
 Manufacturer:Luz Negra

Number: 31.016
 Date:2023-12-13 11:36:42
 Humidity:50%
 Remarks:100cm de tira flexible



Hue Bin	Hue Angle	Rf	Graphic shift(%)	
			Chroma	Hue
1	0.0° - 22.5°	74	-10	1
2	22.5° - 45.0°	76	-9	7
3	45.0° - 67.5°	83	-3	6
4	67.5° - 90.0°	92	0	5
5	90.0° - 112.5°	94	1	4
6	112.5° - 135.0°	91	1	1
7	135.0° - 157.5°	88	-3	-4
8	157.5° - 180.0°	90	-5	-2
9	180.0° - 202.5°	88	-4	1
10	202.5° - 225.0°	88	-4	4
11	225.0° - 247.5°	89	0	6
12	247.5° - 270.0°	92	1	1
13	270.0° - 292.5°	78	0	-13
14	292.5° - 315.0°	75	-4	-22
15	315.0° - 337.5°	77	-5	-12
16	337.5° - 360.0°	73	-11	-9

Model:Ecoled Élite 15 2100K
Tester:Sergio Carneros
Temperature:20Deg
Manufacturer:Luz Negra

Number: 31.016
Date:2023-12-13 11:36:42
Humidity:50%
Remarks:100cm de tira flexible